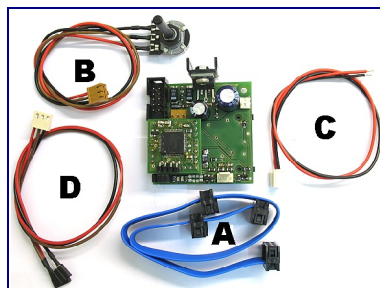


Congratulations for the purchase of your new electronic module made by EIMod. After the assembly your model will be equipped with new functionality.

Please read these instructions carefully before assembling the parts.

Contents

- ThinkTank Blaster PCB
- ThinkTank Blaster CPU PCB
- EMNet ribbon cable with four connectors (A)
- volume control cable (B)
- speaker cable (C)
- cable for connection with proportional receiver (channel 5+6) (D)
- SD-card



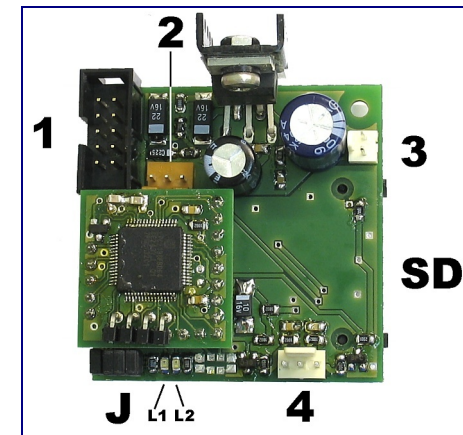
To operate the module you need a ThinkTank Booster (firmware 1.20 or later) and a ThinkTank TLS (firmware 1.17 or later).

Functionalities

- sound module for tank models equipped with EIMod electronic parts.
- up to five independent voices
- 22kHz Sampling-frequency, 8-bit, wav-files.
- 10-bit mixer
- storage medium: standard SD-card
- customizable: creating your own sets of samples is possible with a personal computer.
- supported sounds (depending on the model):
 - up to ten sounds for switching on/off of the motor (shuffle)
 - determination between cold and warm start
 - motor sound depending on speed
 - Up to ten different sounds for squeaking chains which are played randomly depending on speed
 - sounds for turning turret with differentiation between manual and hydraulic/electrical turning
 - sound for barrel moving
 - Gun and MG shot
 - up to four sounds defined by the user (when using a a six-channel proportional set)
- Connection with 4 or 8 Ohm speakers
- Power: 5W at 8Ohm, 10W at 4Ohm
- Size: 48x47 qmm (2x2“)
- EIMod-Bus system (EMNet): Simple connection with other ThinkTank-Modules

Overview of connectors

- 1 EMNet-connector
- 2 connector for volume control
- 3 connector for speaker
- 4 connector for proportional receiver (channel 5+6)
- J jumpers used for configuration of blaster
- SD slot for sd-cards
- L1 Power LED
- L2 Busy LED



Assembly and connection

Please read the following text carefully!

- Connect connector 1, all other ThinkTank modules and the BEC-supply, when existend, with the EMNet cable A
- Connect volume control B with connector 2
- Connect the speaker with cable C to connector 3. If you ordered the blaster with a speaker it will already be delivered with the cable.
- Leave all jumpers closed to activate the standard set of samples for the tiger tank.
- When you install the circuit board, make sure no short circuits can occur.
- A second mounting hole is placed below the CPU PCB.

Initiation

It is essential for proper function of the module that the tank itself and all other modules are installed correctly!

- Make sure all cables have been installed correctly.
- Make sure that all jumpers are put in the right position and that the SD card is well fixed.
- Put in a full charged battery and switch on the tank.
- The power LED starts blinking uniformly for a short time as soon as the connection with the other modules is established.

Operating-LEDs

Power-LED	—	Booster is looking for connected modules
	----	Booster is operational
	-----	no SD card found or card is defect
	-----	initialisation file not found or defect
	-----	warning: maximum number of samples for one set exceeded
	-----	warning: a defined sample could not be found in the set of samples
	-----	another critical error
Busy-LED	flickers when playing the samples	

Switching the motor on and off

After the installation of the ThinkTank blaster, the engine is switched off after power up by default. You can change the state of the engine as follows:

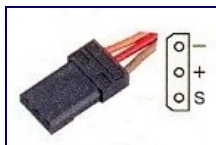
- HL-Tanks without S&S and proportional radio: move the left lever to the left upper position.
- HL-Tanks with S&S: After power up push the ignition button on the radio and wait approx. 10 seconds (the time span which is required for the original HL-ignition sequence to be finished). Move the left lever to the left upper position.

This procedure switches the tank alternately on and off. You cannot move the tank when the engine is off.

User defined samples

With a six-channel proportional set up to four sounds can be defined by the user. Every set of samples is already equipped with demo samples. To play them cable D has to be connected with connection 4 and the proportional receiver.

cable black/brown: channel 5
cable red: channel 6



The plugs are not polarity proof! Make sure that the black cable is connected to the ground

The samples are activated by full deflection of the controls of the channels 5 and 6 and can be terminated by moving the controls in the opposite direction.

Optional sample sets

Take a look at our website for information about new sets of samples. New sets can be downloaded for free and transferred to the SD-card via USB-card reader.

In spring 2007 a tool for PC will be available which makes it easier to create new sound files.

**Nicht geeignet für Kinder unter 14 Jahren.
Not suitable for Children under 14 years.
Ne convient pas pour des enfants de moins de 14 ans.
Niet geschikt voor kinderen onder de 14 jaar.**



EIMod Dipl.-Inf.(FH) Thomas Kusch and Jürgen K. Huber GbR
Millotstraße 15/1
D-72622 Nürtingen
<http://www.el-mod.de>

EIMod

EIMod Dipl.-Inf.(FH) Th. Kusch & Jürgen K. Huber GbR
info@el-mod.de <http://www.el-mod.de>